

## CT Smart Tub Fabricated

Concealed washing machine isolator valves. All pressure 40 mm mixer tap WELS 6 ★ low pressure 4 ★ mains fabricated stainless steel tub, reversible door, child-proof safety catch, 910 mm high, in three widths:



CT350  
350 mm wide

CT465  
465 mm wide

CT565  
565 mm wide

Our CT range with fabricated tub is the descendent of the enormously popular Original Smart tub and Euro Tub ranges from the early 90's through 2010. Because the fabricated tub is 100% made in our Dunedin factory our pricing on the CT is extremely good for the budget conscious buyer.

CT350 Smart Tub CT Petite 350 x 540 x 910 mm  
 CT465 Smart Tub CT Compact 465 x 540 x 910 mm  
 CT565 Smart Tub CT Standard 565 x 560 x 910 mm  
 Options: add at end of code (not available on the CT350)  
 D Drawer 10 kg capacity



## LS Laundry Tub & Cabinet

Our LS range is the best choice for a laundry upgrade when it's not justifiable changing the original taps in your laundry wall. Featuring seamless laundry tubs complete with overflow on a powder coated galvanised steel cabinet with reversible door, child proof safety catch and moveable shelf. The LS1P also includes a washing machine bypass and although the 2 smaller units don't, the knock outs are still there for alternative solutions.



LS350P  
350 mm wide

LS465P  
465 mm wide

LS1P  
565 mm wide

LS350P 13 L S/S tub and cabinet 350 x 440 x 910 mm  
 LS465P 22 L S/S tub and cabinet 465 x 440 x 910 mm  
 LS1P 38 L S/S tub, cabinet and bypass 565 x 460 x 910 mm



## Stainless Steel Tubs Seamless/Pressed



RH6237B 565 x 460 x 220 mm  
 RH6242 465 x 440 x 220 mm  
 RH6241 350 x 440 x 220 mm

Standard with 92mm basket waste and overflow (A2A WASTE)

## Seamless/Spun Flush or Undermount

C4 515 OD 487 id at top 280 mm deep 40 waste  
 C5 470 OD 433 id at top 205 mm deep 40 waste



## Fabricated Tubs

JT1 565 x 450 x 240  
 Can be made any width from 200 up to 600 mm wide



## Stainless Steel Double Tub



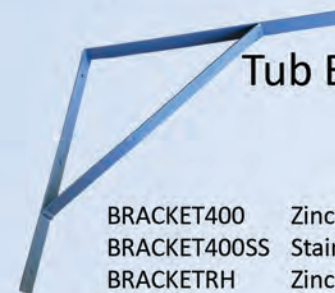
JT1D S/S Double Tub 1060 X 450 X 240 deep 40 mm waste  
 Zinc shield steel brackets and two wastes included

## Stainless Steel Cleaners Tub



JT4 Cleaners Tub 565 x 450, 240 mm deep, upstand 450 mm high. Bucket grid, zinc shield steel brackets and waste included.  
*(if bucket grid is not required then this must be specified on order)*

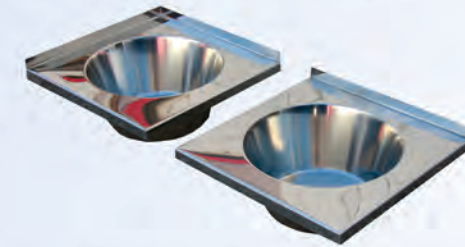
## Tub Brackets



BRACKET400 Zinc shield on steel 400 x 400 x 25 mm  
 BRACKET400SS Stainless steel 400 x 400 x 25 mm  
 BRACKETRH Zinc shield on steel 400 x 400 x 25 mm  
*(for pressed tubs only)*

## Stainless Steel Spun/Seamless Hand Basins

C2 S/S 360 x 360 square, bowl 275 dia x 120 mm deep rear upstand  
 C2C S/S 360 x 360 square, bowl 275 dia x 120 mm deep corner upstand  
 40 mm waste and zinc shield brackets included



WB330 S/S 505 X 410 rectangular, bowl 330 dia 120 deep 40 mm waste and zinc shield brackets included



HB2 300 od 275 id at top 6.25 L 120 mm deep  
 HB3 345 od 305 id at top 130 deep 7 L  
 HB4 400 od 350 id at top 150 deep 11.6 L  
*all are 40 mm waste size and 50 mm can be ordered with the addition of A to the code.  
 For insert or under mount use. (waste not included)*



# DISSCO Laundry Tubs



Made in New Zealand



Proudly made in New Zealand since 1955, our laundry products are constructed from 0.8 mm powder coated galvanised steel. Tub bowls are made from 18/8 pressed or spun stainless steel. Large 92 mm basket waste and overflow are standard with all our pressed bowls and stainless 40 mm waste with our spun bowls. Washing machine bypass and left or right hose access feature on all our systems with taps. All doors are reversible and standard with child-proof safety catch and adjustable shelf.

Dunedin Stainless Steel Co. Ltd. 34-44 Sturdee St, Dunedin, NZ  
 Phone 03 477-3448 Fax 03 477-3101  
 email info@dissco.co.nz web www.dissco.co.nz



## Premiere Laundry Centre



PLC1120G DISSCO gooseneck mixer and LH basin  
PLC1120RHG DISSCO gooseneck mixer and RH basin



PLC1120 DISSCO Std. 40 mm kitchen mixer and LH basin  
PLC1120RH DISSCO Std. 40 mm kitchen mixer and RH basin



PLC1120K DISSCO 40 mm pull out spray mixer and LH basin  
PLC1120RHK DISSCO 40 mm pull out spray mixer and RH basin

More practical bench space than any other tub complemented by large storage drawers combined with a satin bench top that can be user resurfaced to near new when the wear and tear gets too much. Three mixer options to choose from. Under mounted pressed stainless steel tub. Four 450 mm deep drawers. Top mounted 1/4 turn washing machine taps. 1120 mm wide x 910 mm high x 560 mm deep.

Available in 8 colours but standard in white complemented by 300 mm high splashback in matching stainless steel or galvanised steel powder coated in your choice of colour.



LSB1120 Stainless steel satin finished splashback 300 mm high. Colour can be selected by adding the colour name below to the code.

The tub is standard on the left side but can be ordered on the right hand side when required. The drawer layout changes sides to match. All drawers are 450 mm deep and large is 385 mm high with the small at 255 mm high. Options include shorter drawers, no taps or tap holes, double tub and concealed washing machine taps leaving just the mixer. We manufacture these units in our Dunedin factory and flexibility is one of our key strengths.

Colour can be selected by adding the colour names below to the end of the Laundry Centre code.

Grey Friars	Aqua	Wineberry Red	Green
Matt Black	Charcoal	Silver	Cream



## Premiere Door + Frontloader Laundry Centre

Available in left or right hand configuration and featuring a 22 L under mounted tub with a gooseneck mixer and concealed washing machine isolator valves. Large flat stainless work top. Rear and side power provision. Internal washing machine bypass. Our colour range also applies.



- FL1120D Door Front loader LC left hand tub Gooseneck Mixer
- FL1120DRH Door Front loader LC right hand tub Gooseneck Mixer
- FL1120DK Door Front loader LC left hand tub Pull Out Spray Mixer
- FL1120DRHK Door Front loader LC right hand tub Pull Out Spray Mixer



## Premiere Double Drawer Smart Tub

DISSCO Premier double drawer Smart Tub featuring the same sized drawers as our Laundry Centre and the choice of 3 mixers. Top mounted ceramic 1/4 turn washing machine taps or concealed isolators.



- STPDD565CT Std 40 mm mixer and concealed W/M taps
- STPDD565CTG Gooseneck mixer and concealed W/M taps
- STPDD565CTK Pull out spray mixer and concealed W/M taps
- STPDD565 Std 40 mm mixer with top mounted W/M taps
- STPDD565G Gooseneck mixer with top mounted W/M taps
- STPDD565K Pull out spray mixer with top mounted W/M taps



## Premiere Smart Tub

Top mounted 1/4 turn washing machine taps. All pressure 40 mm mixer tap WELS 6 ★ low pressure 4 ★ mains Pressed stainless steel tub, reversible door, child-proof safety catch, 910 mm high, in three widths:



STPP-P  
350 mm  
wide

STPC-P  
465 mm  
wide

STP  
565 mm  
wide

Our premiere range of Smart Tubs just happen to be New Zealand's earliest console laundry tubs first made in 1961. Refined since then to be a market leader with more options and features than any other range currently available. Stainless steel console, single drawer and any of the 3 DISSCO mixers are options in this range over the 3 sizes.

- STPP-P Premier Smart Tub Petite 350 x 540 x 910 mm
- STPC-P Premiere Smart Tub Compact 465 x 540 x 910 mm
- STP Premier Smart Tub Standard 565 x 560 x 910 mm

- Options: add at end of codes above in this order.
- D Drawer 10 kg capacity
  - SS Stainless steel console plate mirror finish
  - G DISSCO Gooseneck mixer
  - SPRAY DISSCO Pull out spray mixer



## CT Smart Tub

Concealed washing machine isolator valves. All pressure 40 mm mixer tap WELS 6 ★ low pressure 4 ★ mains Pressed stainless steel tub, reversible door, child-proof safety catch, 910 mm high, in three widths:



CT350P  
350 mm  
wide

CT465P  
465 mm  
wide

CT565P  
565 mm  
wide

Introduced to provide a more even match to imported alternatives, the use of our mini valves offers a lower budget alternative to our top mounted ceramic washing machine isolators. This product range is in all other terms exactly the same as our Premiere Smart Tub range.

- CT350P Smart Tub CT Petite 350 x 540 x 910 mm
- CT465P Smart Tub CT Compact 465 x 540 x 910 mm
- CT565P Smart Tub CT Standard 565 x 560 x 910 mm

- Options: add at end of code (not available on the CT350)
- D Drawer 10 kg capacity

